

SYLVANIA

SYLVANIA

The next generation in waterproof lighting

Resisto

in    

Although every effort has been made to ensure accuracy in the compilation of the technical detail within this publication, specifications and performance data are constantly changing. Current details should therefore be checked with Feilo Sylvania International Group Kft.

Copyright Feilo Sylvania International Group Kft. January 2021

sylvania-lighting.com

A Feilo Sylvania Company

Light your world

Presenting Resisto, the next generation waterproof

Resisto, the new Sylvania weatherproof range, excels in quality, provides improved installation and functionality, and helps achieve greater energy savings with its SylSmart enabled versions in your parking lots, workshops, storage facilities and underpass areas.

Designed and developed in Germany

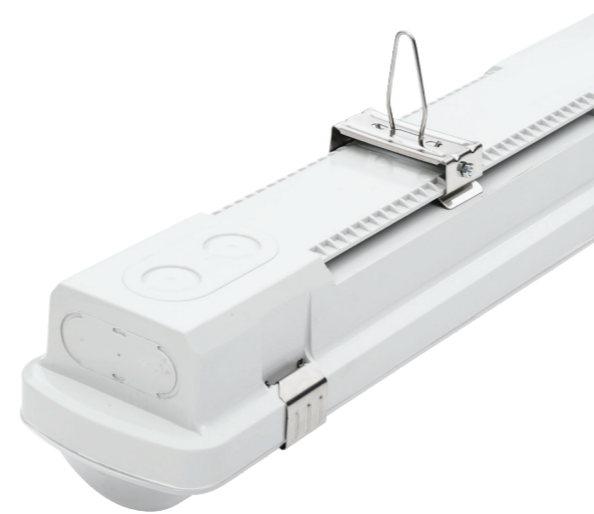
Resisto is an integrated industrial weatherproof fixture designed and developed by Sylvania R&D in Germany. The resilient and durable product range offers industry leading best in class specification and allows for tailored configuration in our European manufacturing plant where required to meet customer specific requirements.



Improved installation and functionality

Sylvania's Resisto boasts with ease of installation by offering a wider ceiling bracket mounting flexibility and additional back inlets. The standard range offers both through-wiring and QC (Stucchi) options.

Resisto's microwave types are available as corridor and master/slave versions and their visual appearance has been improved by eliminating dark ends. Increased body thickness and an additional pair of diffuser clips enhance the robustness of Resisto. Sylvania's new generation weatherproof range has a water and dust resistant polycarbonate body and diffuser, IP66 protection and an impact rating of IK08.



Smart

Sylvania is dedicated to provide you with solutions to save you both money and energy and is able to add value by providing services. Our Resisto range is therefore SylSmart Standalone, SylSmart Connected Building and SylSmart Connected Industry enabled to let you maximise control and minimise costs.

Why Resisto?

- Ideal replacement for T5 and T8 luminaires
- Improved ease and flexibility of installation
- Impressive efficacy of up to 137lm/W for std and for 160lm/W HE type
- Robust and durable – now IP66
- Reduced glare
- SylSmart enabled
- Peace of mind for all users with 5 years' warranty
- Available in 600mm, 1200mm, 1500mm nominal length