



Multi-function waterproof luminaire

YourPro™ Waterproof

YourPro™ Waterproof is a high-quality waterproof range available in 600mm, 1200mm, and 1500mm lengths, offering switchable colour temperatures (3000K, 4000K, and 6500K) and MultiPower options ranging from 8W to 40W. An ideal replacement for T5 and T8 luminaires with

up to 150 lumens per watt, it delivers bright, uniform, and ultra-efficient lighting. Built tough with a 50,000-hour lifespan, water and dust resistant IP65 protection and IK08 impact resistance. Ideal for car parks, garages, workshops, underpass areas and storage facilities.



YourPro™ Waterproof



Features

- Available in 600mm, 1200mm, and 1500mm lengths
- TriTone: switchable colour temperatures: 3000K, 4000K, and 6500K to suit specific customer need
- Selectable dual power (8-16W), (16-32W) and (20-40W)
- Delivers ultra-efficient performance with up to 150 lumens per watt
- Provides a wide 120° beam angle for broad, uniform lighting
- Steel diffuser fixing clips
- Ideal for any industrial facilities, garages, car parks, workshops
- Ensures long-lasting performance with a 50,000-hour lifespan
- Delivers consistent and natural lighting with a CRI of 80
- IP65 Water and Dust proof and IK08 rated for tough impact-resistant

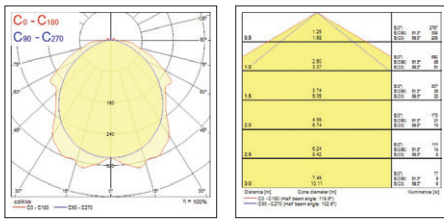
Product information

Code	Description	Power (W)	Luminous Flux (lm)	Efficiency (lm/W)	Beam Angle (°)	CRI	Colour Temp (K)	IP Rating	IK Rating	Housing Color	Length (mm)	Width (mm)	Height (mm)	Average Life (h)
YourPro™ Waterproof														
0090270	YourPro Waterproof 600 IP65 2400LM 3CCT MP	8-16	1200/2400	150	120	80	3000/4000/6500	IP65	IK08	Grey	600	79	68	50,000
0090271	YourPro Waterproof 1200 IP65 4800LM 3CCT MP	16-32	2400/4800	150	120	80	3000/4000/6500	IP65	IK08	Grey	1200	79	68	50,000
0090272	YourPro Waterproof 1500 IP65 6000LM 3CCT MP	20-40	3000/6000	150	120	80	3000/4000/6500	IP65	IK08	Grey	1500	79	68	50,000

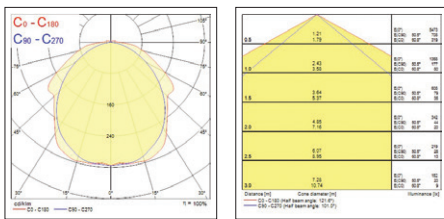
YourPro™ Waterproof



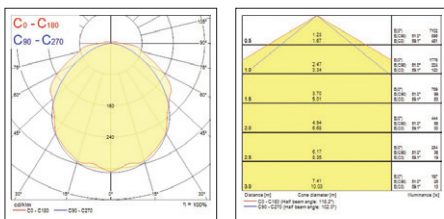
Photometric Data



YourPro™ Waterproof 600

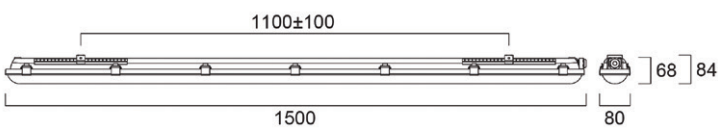
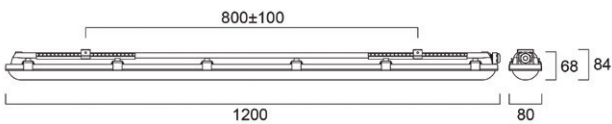
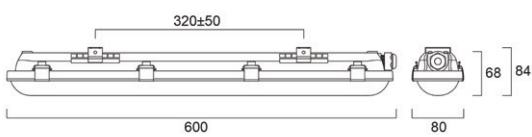


YourPro™ Waterproof 1200



YourPro™ Waterproof 1500

Dimensions (mm)



SYLVANIA



CE UK
CA

in f  

Although every effort has been made to ensure accuracy in the compilation of the technical detail within this publication, specifications and performance data are constantly changing. Current details should therefore be checked with Feilo Sylvania International Group Kft.

Copyright Feilo Sylvania International Group Kft. August 2025

sylvania-group.com

A Feilo Sylvania Company